

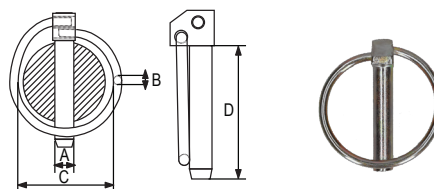
3. SPOJNI PRIBOR General hardware

3.8. Osigurači, kuke, koloturnici

Preklopni osigurač RX-lift

Linch pin RX-lift

A (mm)	B (mm)	C (mm)	D (mm)	Težina (kg/100 kom) Weight
4,5	3,4	34	42	2,0
6	3,4	41	42	2,8
7	3,4	41	42	3,0
8	3,4	41	42	3,5
9	3,4	41	42	3,8
10	3,4	41	42	4,4
11	3,4	41	42	4,6



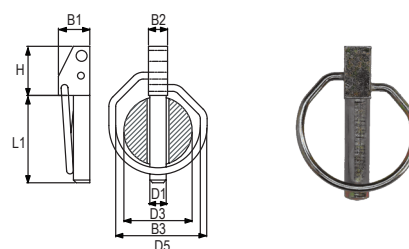
2.1

• završna obrada: cinčano

Osigurač preklopni DIN 11023 RX-lift

Linch pin acc. to DIN 11023 RX-lift

Veličina (mm) Size	B1 (mm)	B2 (mm)	B3 (mm)	D1 (mm)	D3 (mm)	D5 (mm)	H (mm)	L1 (mm)	Težina (kg/100) Weight
5x32	11,5	7	36	4,5	25	2,5	18	32	2,3
6x42	14,0	8	52	5,5	32	3,6	22	42	3,2
8x42	15,0	9	52	7,5	32	3,6	22	42	3,7
10x45	15,0	12	52	9,5	32	3,6	22	45	5,3
12x45	15,0	14	52	11,0	32	3,6	22	45	5,9
12x55	15,0	14	60	11,0	45	4,0	22	55	7,2
17x60	21,0	20	60	16,0	45	4,0	29	60	18,0



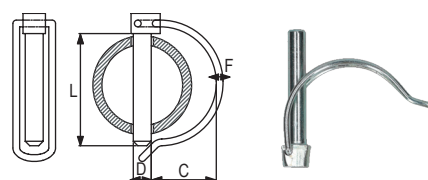
2.1

• završna obrada: cinčano

Osigurač preklopni za cijevi RX-lift

Linch pin for tubes RX-lift

Veličina D (mm) Size	C (mm)	F (mm)	L (mm)	Težina (kg/100) Weight
6	22	3	45	2,9
8	18	3	40	3,0
8	22	3	45	3,2
8	25	3	50	4,8



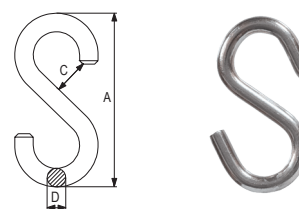
2.1

• završna obrada: cinčano

S kuka RX-lift

S hook RX-lift

Veličina D (mm)	A (mm)	C (mm)	Težina (kg/100 kom) Weight
3	25	3	0,37
4	35	4,5	0,8
5	45	6,5	1,55
6	55	7	2,6
7	65	8	4,34
8	75	10	6,6
10	105	11	15,05
12	120	13,5	21,2



2.1

• završna obrada: cinčano